

Tenor Trombone 1 & 2

Charlie Barber

Taqsim

a fantasia for orchestra

© Charlie Barber

Taqsim a fantasia for orchestra

Duration: c. 4 minutes

Notes:

Throughout the score, double barlines are used to articulate the 10/8 or 10/4 rhythmic structure.

String 'divisi' sections are divided between the two players reading from the same desk

Programme note:

Taqsim – a fantasia for orchestra

A *taqsim* is a traditional form of improvised solo music that typically precedes a classical Arabic, Kurdish, Greek, or Turkish composition. Usually performed by a single instrumentalist - sometimes accompanied by a percussionist or another supporting player - it serves as a free, expressive exploration of a mode or *maqam*.

While this work draws inspiration from this centuries-old practice and retains a sense of improvisatory freedom, it is a fully composed work conceived for a modern symphony orchestra. The main melodic theme is rooted in an instrumental form of Ottoman classical music, characterized by its rhythmic structure, using a specific 10/8 rhythmic pattern.

By expanding the intimate, spontaneous character of a solo *taqsim* into the rich palette of the orchestra, the piece transforms a personal act of ornamentation and discovery into a collective sonic journey - where individual instrumental voices intertwine, echo, and respond within a tapestry of rhythm and melody.

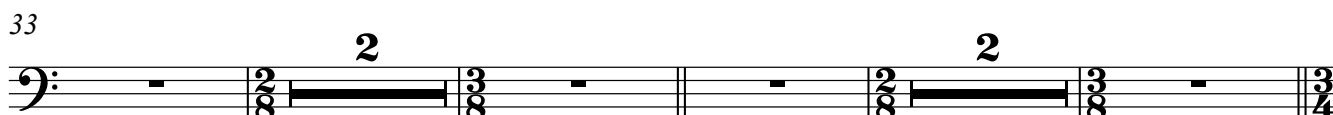
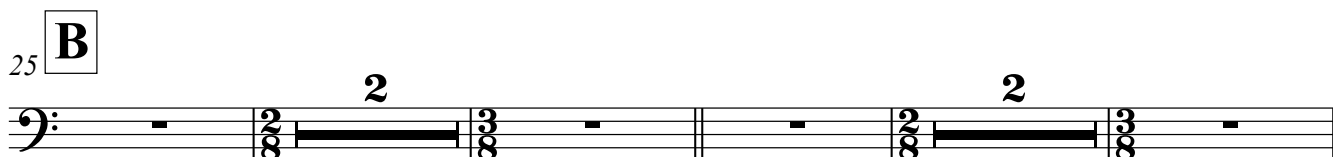
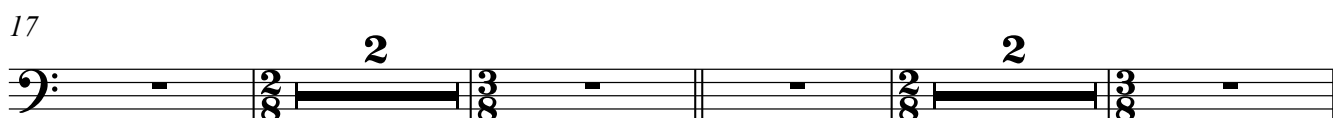
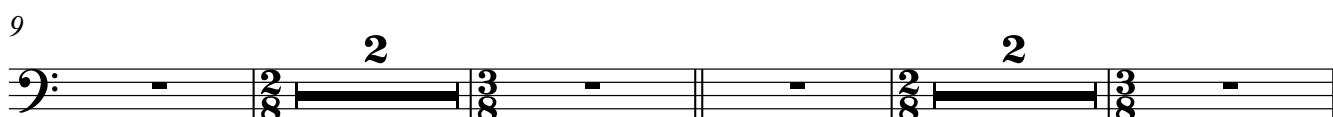
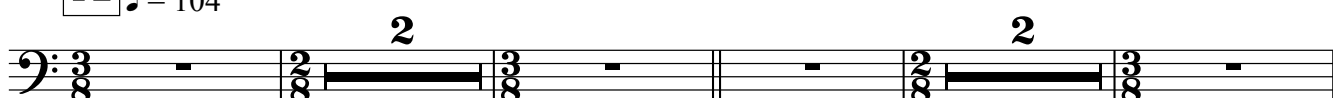
Charlie Barber, September 2025

Taqsim

a fantasia for orchestra

Charlie Barber

A ♩ = 104

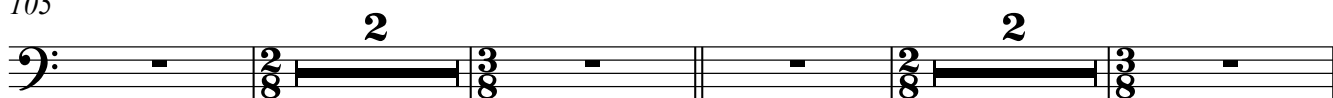


Tenor Trombone 1 & 2

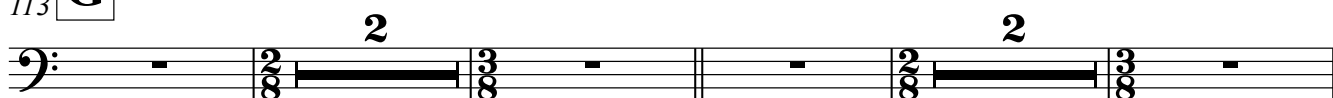
[illegible]

Charlie Barber - Taqsim, a fantasia for orchestra

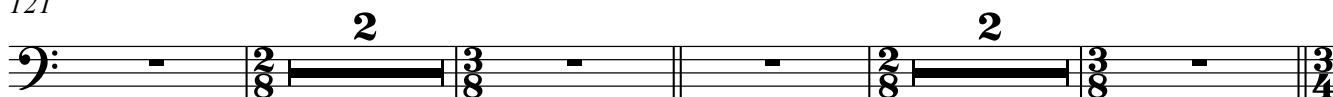
105



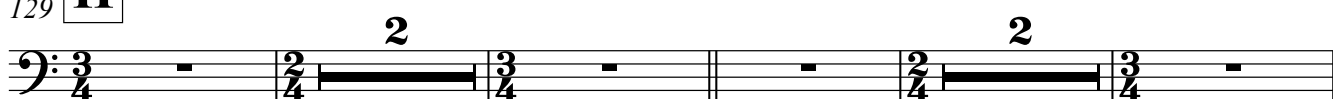
113

G

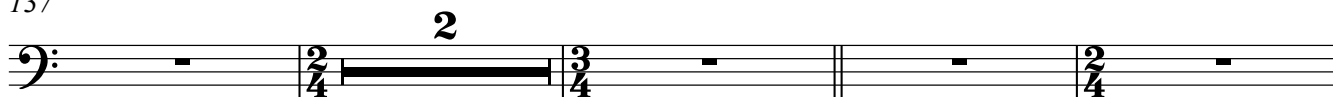
121



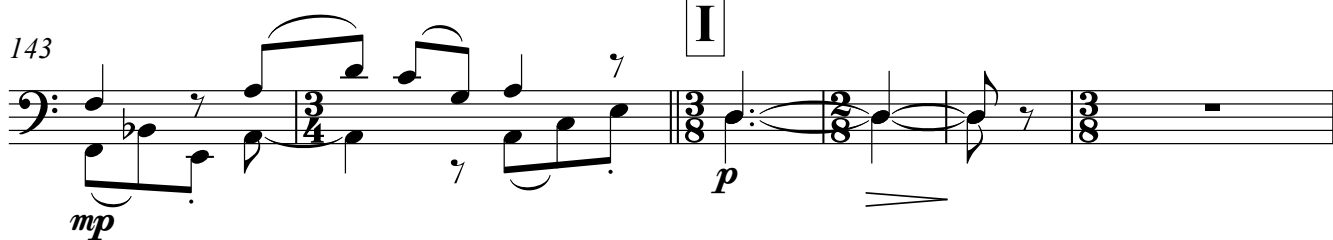
129

H

137



143

I

149



156



Charlie Barber - Taqsim, a fantasia for orchestra

161 **J**

169

177 **K**

185

192

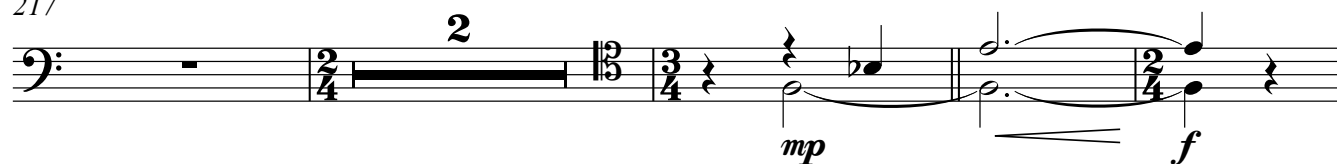
197 **L**

204

211 **M**

Charlie Barber - Taqsim, a fantasia for orchestra

217

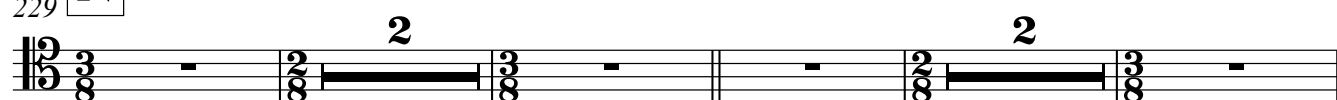


223

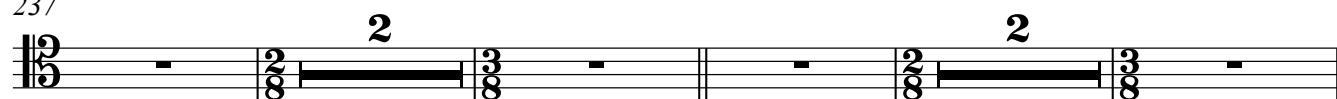


229

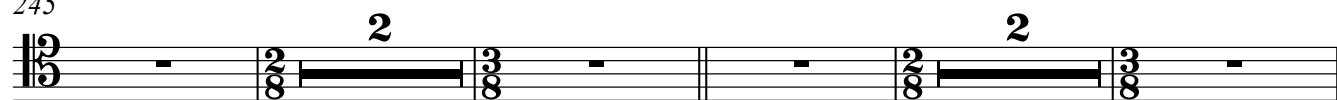
N



237



245



253



Rit.